

MODERN ART FOR SOUTH AFRICA

VERSIONS OF ART (TLD)

Everyone with HIV
needs to take HIV treatment
– called antiretroviral
therapy, ART or ARVs

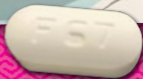
NOVEMBER 2022





**THEY LOOK
DIFFERENT,
BUT IT IS
THE SAME
MEDICINE!**

These are versions of TLD pills & packaging that are exactly the same medicine.



LUVIGEN





EMDOLTEN

NUVACO



VOLUTRIP

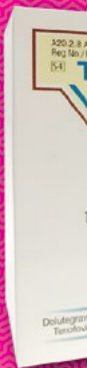
REYDIN

Film-coated tablet

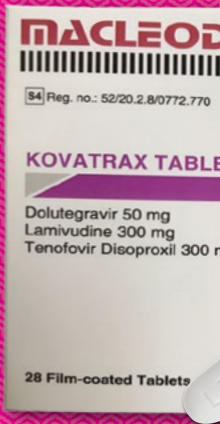
Dolutegravir 50 mg
Lamivudine 300 mg
Tenofovir disoproxil 300 mg

30 tablets

Cipla



REYDIN



TELATRI

DS
ETS
ng



MACLEODS



ACRIPTEGA



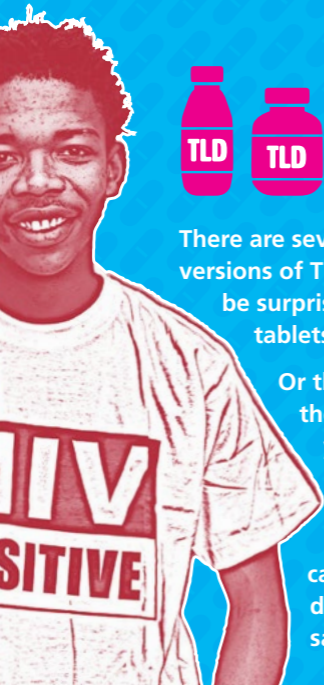
WHAT IS TLD?

ART is usually three ARVs in one pill – called a fixed-dose combination.

The most recent combination of ARVs is: tenofovir (TDF), lamivudine (3TC) and dolutegravir (DTG).

This combination is called TLD.





There are several different versions of TLD. Don't be surprised if your tablets change.

Or they don't look the same as your family or friend's HIV medicine! Packaging can also look different for the same medicine.

WHAT IS THE DIFFERENCE BETWEEN THE VERSIONS?

The pills and packaging might look different – however they are made using the exact same ingredients and are the same quality.

The reason there are different versions is because they can be made cheaper and more available.



**ARE THE DIFFERENT
VERSIONS OF TLD
LESS EFFECTIVE?**

NO.



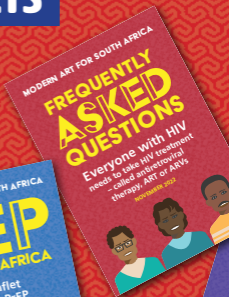
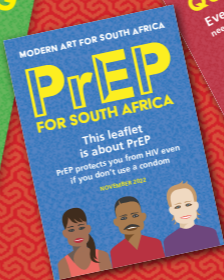
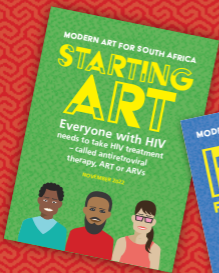
Generic pills are made using the same methods and ingredients so they are exactly the same.

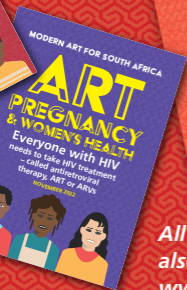
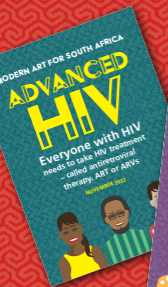


FOR MORE INFORMATION

ON ART SEE OUR

OTHER BOOKLETS





All this information is also available on our website:
www.modernartforsouthafrica.co.za



Find out more about treatment
and the free app at:

www.modernartforsouthafrica.co.za

   @modernart4sa

